

A Curriculum Tailored for Medical Doctors



Empower Translational Research
Expand your medical expertise by integrating life sciences and advanced research skills, enabling you to drive translational research.



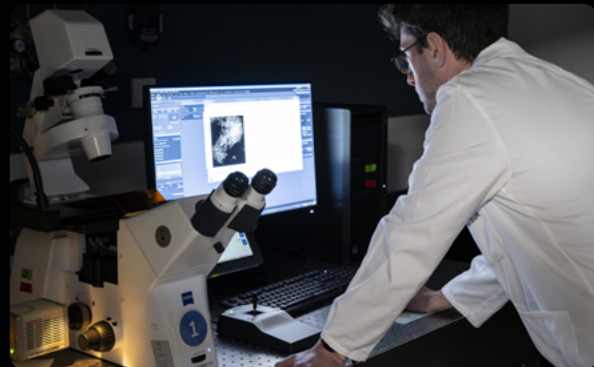
Personalized Curriculum
Discover a wide array of research possibilities in medicine, biomedical sciences, and public health tailored on your professional project.



Dual Mentorship
Receive guidance from both a medical and scientific tutor, fostering interdisciplinary collaboration.



Collaborative Network
Join a vibrant community of MDs working on the Institut Pasteur campus and in partner hospitals.



Learn more



www.pasteur.fr/en/education/ppu#PPU-MD-PHD

Education Department
Institut Pasteur
25-28, rue du Docteur Roux
75724 Paris Cedex 15
www.pasteur.fr/en/education/

✉ md-phd@pasteur.fr

Institut Pasteur Education



INSTITUT
pasteur

INSTITUT
pasteur



Pasteur-Paris University (PPU) MD-PhD

FOR MEDICAL STUDENTS & HEALTH
PROFESSIONALS (MDs, PharmDs, VetDs)

Bridging Fundamental, Applied Research & Clinical Practice



© Photos : Antoine Séguin, Serre et Jardin 00060062, vendredi 24 octobre 2025

A **three-year PhD program** for French and International health professionals (MDs, PharmDs, VetDs) and medical students seeking to enhance their curriculum with a PhD.

Why?

This program is designed to deepen **clinical research expertise**, address **public health challenges**, and promote **collaboration between scientific and medical institutions**.

How?

In a rapidly evolving medical and biomedical landscape, the PPU-MD-PhD program offers a **specialized curriculum to pursue an early thesis (during medical studies) or a late thesis (during residency or thereafter) in life sciences**.

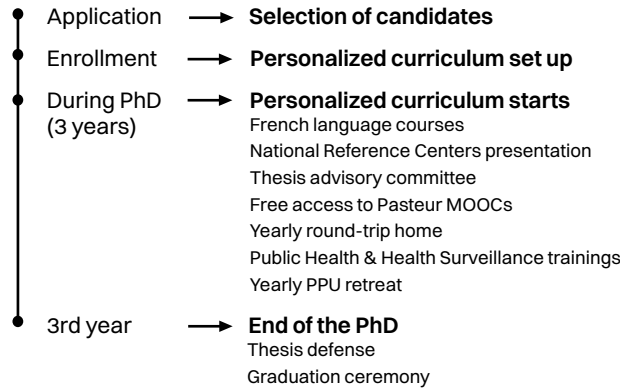
Where?

The **Institut Pasteur**, located in the heart of Paris, offers an ideal research setting, characterized by **cutting-edge scientific and multidisciplinary expertise** providing:

- A **collaborative environment with high-quality resources**.
- The opportunity to engage with a **community of international scientists and students**.
- Access to extensive **national and international connections** fostering unique research opportunities.

PhD Students on Campus	380+	National Reference Centers	16
Nationalities	50+	European Reference Centers	3
Research Units	150	WHO Collaborating Centers	8
Pasteur Network Institutes	30+	Nobel Prizes	10

Timeline of the program



Application Process

- The call for applications opens every year in **September**.
- Host laboratories select a candidate for each project. The **student/project pair goes through the PPU selection process in late November**.
- Shortlisted candidates will be **invited for an interview at the Institut Pasteur between late January and early February**.
- Candidate selection concludes. The **results are announced by mid-February**.
- Selected candidates **begin at the Institut Pasteur on October 1st** of the same year.

Explore More Opportunities

The PPU-MD-PhD is a track of the larger MD-PhD Program, offering medical students and health professionals opportunities for **research internships, doctorates, and hospital collaborations**.



www.pasteur.fr/en/md-phd-program

Student benefits

3 -year salary



A dedicated **Doctoral Student Office**



Administrative support



Housing assistance



Healthcare support



Cultural, social & sports activities



Numerous international conferences on campus



Scientific seminars given by outstanding worldwide scientists



Grants for international scientific workshops & meetings

PhD Diploma Delivered by Partner Universities

