

The background of the cover is a photograph of the Institut Pasteur building, a modern structure with large glass windows reflecting the sky and surrounding environment. In the foreground, a wide set of stone steps leads up to the building's entrance. A group of people, including several in white lab coats, are gathered on the steps and plaza. A person in a bright yellow shirt is walking down the steps. The sky is blue with scattered white clouds.

EDUCATION DEPARTMENT

# Housing guide of Institut Pasteur

UPDATE JULY 2025

# Housing solutions for our employees, PhD students, post-docs, visitors, trainees

*Welcome to the Institut Pasteur!*



The Education Department offers this booklet to help you in your search for accommodation that best fits your budget and requirements.

Discover here a selection of solutions adapted to your needs.

For more information, please visit our website:

[www.pasteur.fr/en/housing-paris](http://www.pasteur.fr/en/housing-paris)

# 1 – Cité Internationale Universitaire de Paris (CIUP) Institut Pasteur partnership

A partnership was signed with the [Cité Internationale Universitaire de Paris](#) (17 Bd Jourdan, 75014 Paris), which provides 65 rooms to Institut Pasteur: 18 one-person studio apartments at the [Fondation Deutsch de la Meurthe](#), 7 two-person studio apartments at the [Maison des Provinces de France](#) and 40 one-person rooms either at the [Collège Franco-Britannique](#) or at the Fondation Deutsch de la Meurthe.



## RATES:



<i>Rates per month include all charges and taxes from 1 September to 31 December 2025</i>	
Single room	707 €
1 person studio apartment	915 €
2 persons studio apartment	1077 €

# 2 – Association Arcade-VYV-ALFI Institut Pasteur partnership

The Institut Pasteur has established a partnership with [ALFI](#), a social and solidarity economy association of the Arcade-VYV Group, in order to offer 30 housing units to Pasteurians. 20 furnished studios and individual rooms, with a private shower and toilet are available at the Tolbiac residence, located at **35 rue de Tolbiac, 75013 Paris**. 10 furnished individual studios, with a private shower, toilet, and kitchenette are available at the Dolent residence, located at **8 rue Jean Dolent, 75014 Paris**.



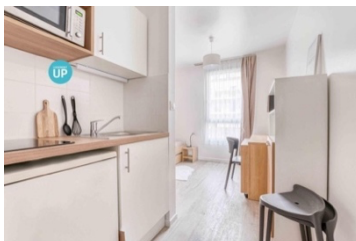
## RATES:

Rates vary depending on the residence and type of housing, with the total cost ranging from approximately **€450 to €550 per month**, all charges included (electricity, heating, water, Wi-Fi, etc.). APL (Personalized Housing Assistance) deductions may further reduce these costs. Home insurance remains the tenant's responsibility.



### 3 – Real estate company Nexity Studéa Institut Pasteur partnership

The real estate company [Nexity Studéa](#) has a large network of student residences in France, with more than 50 residences located in Paris and Île-de-France. The simplified procedure established by the Institut Pasteur allows Pasteurians to access housing without application processing fees and without a guarantor. The housing occupancy is ensured throughout the duration of activity at the Institut Pasteur. The list of available housing can be found [here](#). Services provided vary depending on the residence and type of housing. The full list of services and facilities should be checked directly with each residence.



#### RATES:

Rates vary depending on the residence and type of housing, but the average cost is around **€800 per month**, charges included (water, Wi-Fi, and other residence-dependent charges). The accommodation rate may be further deductible after APL. Electricity consumption and home insurance remain the tenant's responsibility.

#### RESERVATION PROCEDURE FOR ALL THREE PARTNERSHIPS:

Eligible persons should fill out the **Accommodation Request Form**.

#### CONTACT:

**Jean Mandart**

26, rue du Docteur Roux  
75015 PARIS France

Thursday & Friday from 1:00 pm to 5:00 pm  
Social Building (06) Lower Ground Floor  
Office 19A  
Tel: +33 1 40 61 35 70

[housing@pasteur.fr](mailto:housing@pasteur.fr)





*Disclaimer: Please, note that the Institut Pasteur has no financial ties with these houses, institutions, residences and that the links below are only suggestions to help you find housing and that your choice is completely open.*

## 4 - Houses – Centers



### **Foyer Saint Jean Eudes** - 1 Rue Jean Dolent, 75014

Paris Duration: Short stay (1 day authorized)

Residents: Girls / Boys

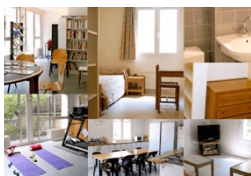
Transportation: line 6 métro Glacière, travel time: 7min

Price: Single Bed room: 54 €

Double Bed room: 68 €

Contact: +33 (0)1 44 08 70 00 - [contact@fsje.fr](mailto:contact@fsje.fr)

[Website](#)



### **Foyer Pierre Olivaint** - 5 bis, avenue Sainte Eugénie, 75015 Paris

Duration: At least 1 month

Residents: Girls 18-25 years old

Transportation: line 12 métro Convention, travel time: 4min

Price: 472 € / month

Contact: 01 53 68 11 11 - [contact.free@vivre-devenir.fr](mailto:contact.free@vivre-devenir.fr)

[Website](#)



### **Service Social Breton** - 28 rue du Cotentin, 75015 Paris

Duration: At least 1 month

Residents: Girls (18-25 years old)

Transportation: 5 min by walk from Institut Pasteur

Price: (breakfast included) 590 € / 17 m<sup>2</sup> / month;

Registration fees: 95 €; security deposit: 523€

Contact: +33 (0)1 56 80 15 15 - [info@service-social-breton.org](mailto:info@service-social-breton.org)

[Website](#)



### **Centre International de séjour Kellermann** - 17 Boulevard

Kellermann, 75013 Paris

Duration: Short stay accepted (less than a month)

Residents: Girls / Boys

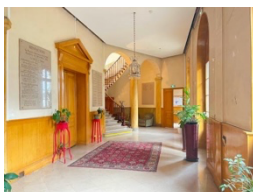
Transportation: line 7 Métro Porte d'Italie, travel time: 19 min

Price (breakfast included): Twin rooms 74.2 € / night

Standard room with bathroom 86 € / night

Contact: +33 (0)1 43 58 96 00

[Website](#)



### **Foyer Fondation Eugène Napoléon** - 254 rue du

Faubourg Saint Antoine, 75012 Paris

Transportation: line 6 Métro Nation, travel time: 22 min

Residents: Girls 18-25 years old

Price: Individual room "full comfort": 670€ / month

Individual room "semi-comfort": 595€ / month

Shared room (colocation): 390€ / month

Contact: [contact@fondation-eugenenaoleon.org](mailto:contact@fondation-eugenenaoleon.org)

[Website](#)



### **Foyer Le Pont** - 86 rue de Gergovie, 75014 Paris

Duration: Short stay accepted (less than a month)  
 Transportation: 19 min by walk form Institut Pasteur  
 Price Single room: 58 € / night Breakfast: 8 €  
 Price Twin room: 75 € / night  
 Contact: +33 (0)1 45 42 51 21 - [info@foyerlepont.fr](mailto:info@foyerlepont.fr)  
[Website](http://foyerlepont.fr)



### **Fondation Paumier Verne** - 63 rue Pernety, 75014 Paris

Transportation: 17 min by walk form Institut Pasteur  
 Price: Single room: 610 € / month  
 Double room: 430 € / month  
 Contact: [residence@paumier-vernes.org](mailto:residence@paumier-vernes.org) or  
[candidature@paumier-vernes.org](mailto:candidature@paumier-vernes.org)  
[Website](http://paumier-vernes.org)

## 5 – Residences for students and trainees

### **Résidence Paris Sablonnière** - 7 rue Meilhac, 75015 Paris

Duration: 1 month minimum

Residents: Girls/ Boys

Transportation: Ligne 6 Métro Cambronne, travel time: 3min

Price: Single room and Furnished studio: from 370 € to 439 € / month

Contact: +33 (0)1 43 06 43 18 - [contact.dat@adef.asso.fr](mailto:contact.dat@adef.asso.fr)

[Website](http://adef.asso.fr)



### **Résidences Les Estudines**

Offre City Pack: This option ensures an accommodation for the course leaders, speakers for a short stay

Duration: At least 1 month

Residents: Girls/ Boys

Transportation: Depending on the chosen residence

Price: From 680 € charges included

Reservation center: +33 (0)9 69 39 22 00

[Website](http://lesestudines.com)



### **Résidence Simone Veil** - 162-168 avenue Paul Vaillant Couturier, 75014 Paris

Transportation: RER B Cité Universitaire or Gentilly

Two types of housing:

For master students (priority for scholarship holders):  
 from 415 € / month (19-23 m²)

For PhD students and post-doctoral researchers (under 30):  
 586-806 € / moth (24-46 m²)

Contact: [etudiants-instruction75@espacil.com](mailto:etudiants-instruction75@espacil.com)

[Website](http://espacil.com)



### **Résidence Irène Joliot Curie - 2-10 rue Madeleine Brès, 75013 Paris**

Transportation: Poterne des Peupliers tramway station (T3) leading directly to the Porte de Versailles and to Institut Pasteur in 30 minutes.

For researchers: apartments from T1 bis to T2, from 20 to 40 m<sup>2</sup>.

For students: apartments from T1 to T1bis, from 20 to 33 m<sup>2</sup>.

For master students (priority for scholarship holders): from 460€/ month (19-27 m<sup>2</sup>)

For PhD students and post-doctoral researchers (under 30): 515-6 € (22-38 m<sup>2</sup>)

[Website](#)



### **JUMO - 42 rue Cambronne 75015 Paris**

Jumo Paris: a co-living experience located in the heart of the 15th arrondissement of Paris, homes spread over floors, composed of studios, private apartments (T2) and common areas

From 1077€/ month for studio, 20m<sup>2</sup>

Admin fees from 470 €

[Website](#)



### **Hife**

A place to live, work or take advantages of spaces and events from 1065 € / month for studio, 21m<sup>2</sup>, 1 or 2 persons

15 rue Guynemer 992130 Issy-les-Moulineaux

15 avenue de Raspail 994250 Gentilly

[Website](#)



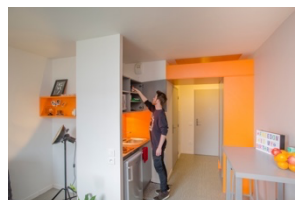
### **Cardinal Campus**

Student residences with relaxation areas and services

From 665 € / month for studio

Paris and Ile-de-France

[Website](#)





## 6 – Housing platforms

### **Locaviz**

This platform lists all types of student accommodation from private individuals in the city. You can access offers by logging in via your account at [www.messervices.etudiant.gouv.fr](http://www.messervices.etudiant.gouv.fr)

[Website](#)

### **Roomlala**

A room rental platform offering temporary or long-term housing solutions for students, workers, and travelers.

[Website](#)

### **Adele**

A directory of student residences with the possibility to book one or more accommodations via a free online form, supported by a multilingual team to assist you.

[Website](#)

### **Wellow**

A roommate platform offering furnished rooms in shared apartments in Paris, with a dynamic community and simplified administrative support.

[Website](#)

### **LocServices**

A platform connecting landlords and tenants without an agency. Tenants submit their applications and are contacted directly by property owners.

[Website](#)

### **PAP (Particulier à Particulier)**

An online platform allowing landlords and tenants to post and find rental listings without going through an agency, avoiding intermediary fees.

[Website](#)

### **Jinka**

A mobile app that centralizes real estate listings from over 100 websites and sends real-time alerts to help find housing quickly.

[Website](#)

### **GensDeConfiance**

A community-based platform offering rental listings between private individuals, accessible only to recommended members to ensure secure and high-quality exchanges.

[Website](#)

# Useful links

## **French national EURAXES portal**

[EURAXESS centers](#) provide free and personalized services to researchers and their families. You will also find contact details for all service centers available in France, along with information on entry and residence conditions, housing, and everything needed to prepare for your stay in France.

[Website](#)

[Housing Guide for International Researchers](#)

## **Agence Nationale pour l'Information sur le Logement (ANIL)**

ANIL provides free and impartial advice on housing, financial aid, and tenant and landlord rights.

[Website](#)

## **Ministère de l'aménagement du territoire et de la décentralisation**

Public policies aimed at improving access to housing, including homeownership, housing assistance, social housing, and combating inadequate housing.

[Website](#)

[The "Accommodation" page on Service-Public.fr](#) offers detailed information on various housing aspects, such as property purchase, financial aid, renting, expropriation, housing protection, urban planning, co-ownership, and practical living conditions.

## **CAF (Caisse d'Allocation Familiale)**

The CAF provides financial assistance for housing through programs like APL (Aide Personnalisée au Logement), ALS (Allocation de Logement Social), and ALF (Allocation de Logement Familial) to help tenants reduce their rental costs.

[Website](#)

## **Electricity and natural gas providers comparison**

To compare energy providers' prices, use online comparison tools such as [Énergie-Info](#), [Selectra](#), or [Hello Watt](#), which analyze offers based on your consumption and budget.

## **Rent control in Paris**

Since 2019, rent prices in Paris have been regulated. Check if you are affected.

[Website](#)

## **Garantie visale**

A free rent guarantee program offered by Action Logement, covering unpaid rent and damages for eligible tenants, facilitating their access to housing.

[Website](#)