

2025  
SEPTEMBER



# Housing guide

Education  
DEPARTMENT

INSTITUT  
pasteur



Bienvenue!

# Welcome to the Institut Pasteur!

The Education Department has compiled this booklet to guide Institut Pasteur students, PhD candidates, postdoctoral fellows, trainees and visiting scientists toward accommodation that suits both their budget and their needs.

Inside, you will find a curated selection of options - including our housing partners (CIUP, ALFI and Nexity Studéa), as well as contact details for additional residences, houses, hostels and housing platforms - plus practical information to help you get settled in Paris and Île-de-France.



For more details, visit our website:  
[www.pasteur.fr/en/housing-paris](http://www.pasteur.fr/en/housing-paris)



If you have questions about your stay,  
consult our FAQ:  
[www.pasteur.fr/en/housing-paris/faq](http://www.pasteur.fr/en/housing-paris/faq)



For any other enquiries, please write to:  
[accommodation@pasteur.fr](mailto:accommodation@pasteur.fr)

# Accommodation partnerships

The Institut Pasteur has established partnerships with the Foundation la **Cité Internationale Universitaire de Paris (CIUP)**, social responsibility association **ALFI-VYV-Arcade** and real estate agency **Nexity Studéa**. Each housing partnership differs in terms of localization, monthly rent price and admission conditions.

## Cité Internationale Universitaire de Paris (CIUP)



The **CIUP** comprises 43 residences and shared facilities (swimming pool, stadium, theater, university restaurant, etc.), as well as numerous support services (administrative procedures, daily life assistance, housing search support).

The partnership with the CIUP provides **65 furnished housing units** to the Institut Pasteur:

- **18 one-person studio apartments** at the Fondation Deutsch de la Meurthe
- **7 two-people studio apartments** at the Maison des Provinces de France
- **40 one-person rooms** with private bathroom and shared kitchen either at the Collège Franco-Britannique or at the Fondation Deutsch de la Meurthe

Stays starting **from one month up to one year** are possible.

Rates per month as of September 1st, 2025 all charges and taxes included:

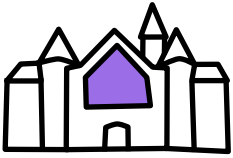
- **€707** for a single room
- **€915** for a one person studio
- **€1077** for a two people studio apartment

### Eligibility:

- students pursuing studies at a minimum Master's level (Bac+4) or equivalent: Master's degree students, PhD students, Pasteur Course students, interns
- post-doctoral researchers, visiting researchers (from Pasteur Network and other partnerships)







## ALFI association

The partnership with ALFI association provides for the rental of **30 furnished housing units** (studios and rooms) located in two residences in the 13th and 14th arrondissements of Paris. These accommodations are reserved for **low-income** students, interns, PhD students, young scientists and professionals in research or health sciences **aged 18 to 35**. Stays can run **from six months up to two years** and are renewable, with longer durations preferred.

**ALFI**

35 rue de  
Tolbiac 75013  
Paris



from  
**€454**  
per month



Tolbiac residence offers **20 housing units (one-person studios with kitchenette and individual rooms)**, each with a private bathroom and access to a shared, fully equipped kitchen and dining area. The Wi-Fi access is free. Dolent residence provides **10 one-person studios** featuring a private shower, toilet and kitchenette, and also access to on-site parking. Both residences supply fresh bed linen, laundry facilities, secure badge entry, video-surveillance in common areas, 24/7 emergency assistance, two weekly office hours with the residence manager and one with ALFI's social worker.

Institut Pasteur

**10 min**  
by metro  
**13 min**  
by bike

Monthly rents covering electricity, heating, hot and cold water, maintenance of common areas and use of residence facilities range from **€454** for accommodation in Tolbiac and from **€534** for the larger studios at Dolent. These amounts can be reduced by APL (the French personalized housing allowance paid by the Caisse d'Allocations Familiales) according to the tenant's income and status. ALFI assists with administrative procedures. Home insurance remains the tenant's responsibility.



**ALFI**  
8 rue Jean  
Dolent 75014  
Paris



from  
**€534**  
per month

## Nexity Studéa

The real estate company **Nexity Studéa** has a large network of student residences in France, with **more than 50 residences** located in Paris and Île-de-France. The simplified procedure established by the Institut Pasteur allows Pasteurians to access housing **without application processing fees** and **without a guarantor**. The housing occupancy is ensured **throughout the duration of activity** at Institut Pasteur.



Nexity Studéa provides secure, fully furnished and connected **one-person studios** in residences with on-site management, video surveillance and, in many locations, amenities such as gyms, coworking areas, parking, bike storage and shared kitchens, while rent includes internet, laundry, equipment rental, psychological support, online sports classes, social events, academic coaching, pay-per-use extras like cleaning or dish kits. Services provided vary depending on the residence.

The rental of housing is open to all young scientists and professionals in research and health sciences working at Institut Pasteur, with **no age limit**. Rates vary depending on the residence and type of housing, but the average cost is around **€800 per month**, all charges included (water, Wi-Fi, and other residence-dependent charges). Electricity consumption and home insurance remain the tenant's responsibility but can be included in the monthly rent.

## HOW to apply

**For all three partnerships:** individuals meeting the above conditions must complete the **Accommodation request form**.

Accommodation requests will be considered once the applicant has been **accepted** into a course, their internship agreement has been **validated**, or **all administrative conditions** for their stay at Institut Pasteur **have been met**. Depending on availability, the applicant will receive either approval or rejection of their request.

SCAN THIS QR CODE



<https://forms.office.com/e/OfpEspWlXR>

# Houses & hostels



**Disclaimer:** please, note that the Institut Pasteur has no financial ties with these houses, hostels, institutions, residences and that the links below are only suggestions to help you find housing.



**Foyer Saint Jean Eudes** 1  
Rue Jean Dolent, 75014  
Paris

**Duration:** short stay (1 day authorized) **Price:**  
Single Bed room: €68/night Double Bed room:  
€94 /night **Contact:** +33(0)144087000  
[contact@fsje.fr](mailto:contact@fsje.fr)



**Foyer Pierre Olivaint** 5 bis,  
avenue Sainte Eugénie,  
75015 Paris

**Duration:** at least 1 month **Residents:** Girls (18-  
25 years old) **Price:** €440/month **Registration**  
**fees:** €65 **Security deposit:** €431 **Contact:**  
+33(0)153681111 [contact.free@vivre-  
devenir.fr](mailto:contact.free@vivre-devenir.fr)



**Service Social Breton** 28  
rue du Cotentin, 75015  
Paris

**Duration:** at least 1 month **Residents:** Girls  
(18-25 years old) **Price:** (breakfast included)  
from €541/month; **Registration fees:** €95  
**Security deposit:** €541 **Contact:**  
+33(0)156801515 [info@service-social-  
breton.org](mailto:info@service-social-breton.org)



**Centre International de**  
**séjour Kellermann** 17  
Boulevard Kellermann,  
75013 Paris

**Duration:** short stay accepted (less than a  
month) **Price** (breakfast included): Twin rooms  
€74.2/night  
Standard room with bathroom €89.4/night  
**Contact:** +33(0)143589600



**Fondation Paumier Verne**  
63 rue Pernety, 75014  
Paris

**Price:** Single room: €580 /month  
Double room: €400/month **Registration fees:**  
€60  
**Contact:** [residence@paumier-vernes.org](mailto:residence@paumier-vernes.org) or  
[candidature@paumier-vernes.org](mailto:candidature@paumier-vernes.org)



**Foyer Fondation Eugène**  
**Napoléon** 254 rue du  
Faubourg Saint Antoine,  
75012 Paris

**Residents:** Girls (18-25 years old)  
**Price:** Individual room "full comfort": €685/  
month  
Individual room "semi-comfort": €605/month  
Shared room (colocation): €395/month  
**Contact:** [contact@fondation-  
eugenenapoleon.org](mailto:contact@fondation-eugenenapoleon.org)



**Foyer Le Pont** 86 rue de  
Gergovie, 75014 Paris

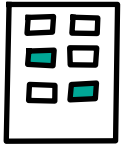
**Duration:** short stay accepted (less than a  
month) **Price:** Single room: €58/night Twin  
room: €75/night **Contact:** +33(0)145425121  
[info@foyerlepont.fr](mailto:info@foyerlepont.fr)



**Foyer Anne-Marie Veder**  
168 rue Blomet, 75015  
Paris

**Duration:** short stay accepted **Residents:** 18-  
25 years old  
**Price:** Individual room €727/month Double  
room €606/month  
**Contact:** +33153687830





# Student residences

**Les Estudines** is a national network of over 30 student residences in Paris and Île-de-France, offering affordable, furnished housing with services.

Reservation center:  
+33(0)969392200



For course leaders and speakers: option Offre City Pack ensures an accommodation for a short stay.

For students: at least 1 month stay Price: from €680/month charges included



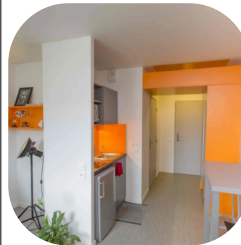
**Espacil Habitat** is a housing provider for students and young professionals. It delivers spacious secure furnished studios and apartments with the priority given to master's scholarship holders and researchers under 30 years old.



Price: for both residences **Simone Veil** (75014) & **Irène Joliot Curie** (75013) rates vary from €421/month for a studio for students, from €535/month for a studio and from €822/month for an apartment for researchers, no registration fees.



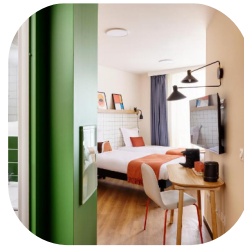
**Adef association** offers housing solutions in Parisian region for individuals who lack direct access to social or private rental housing or need temporary accommodation. Price: €370/month for a room and €439/month for a studio at the residence **Sablonnière** (75015)



**Cardinal Campus** is an international student housing provider offering modern, fully furnished residences with common spaces and services for students and young professionals. Price: from €670/month all charges included



**Hife coliving** is a community-focused housing concept designed for students and young professionals, offering fully furnished private rooms and apartments, with shared common spaces (lounges, kitchen, coworking areas). Price: from €865/month



**Colonies** is a co-living and flatsharing experience in Paris and Île-de-France composed of private rooms, studios and apartments, common areas (kitchen, social lounge, gym, laundry room). Price: from €640/month. Administrative fees may apply



colonies





# Housing platforms



**Lokaviz:** a platform which lists all types of student accommodation from private individuals in the city. You can access offers by logging in via your account at [www.messervices.etudiant.gouv.fr](http://www.messervices.etudiant.gouv.fr)

## Roomlala



**Roomlala:** a room rental platform offering temporary or long-term housing solutions for students, workers and travelers



**Adele:** a directory of student residences with the possibility to book one or more accommodations via a free online form, supported by a multilingual team to assist you.



**Wellow:** a roommate platform offering furnished rooms in shared apartments in Paris, with a dynamic community and simplified administrative support.



**LocServices:** a platform connecting landlords and tenants without an agency. Tenants submit their applications and are contacted directly by property owners.

## PAP



**PAP (Particulier à Particulier):** an online platform allowing landlords and tenants to post and find rental listings without going through an agency, avoiding intermediary fees.

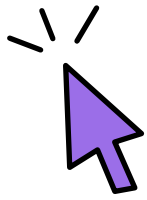


**GensDeConfiance:** a community-based platform offering rental listings between private individuals, accessible only to recommended members to ensure secure and high-quality exchanges.

## Jinka



**Jinka:** a mobile app that centralizes real estate listings from over 100 websites and sends real-time alerts to help find housing quickly.



# Useful links



**Public policies** aimed at improving access to housing, including homeownership, housing assistance, social housing, and combating inadequate housing. The "Accommodation" page on Service-Public.fr offers detailed information on various housing aspects, such as property purchase, financial aid, renting, expropriation, housing protection, urban planning, co-ownership, and practical living conditions.

**Agence Nationale pour l'Information sur le Logement (ANIL)** provides free and impartial advice on housing, financial aid and tenant and landlord rights.



**DossierFacile** is a free online platform that helps tenants create a simple, secure, and professional rental application, making it easier to secure housing.



**French national EURAXESS centers** provide free and personalized services to researchers and their families. You will also find contact details for all service centers available in France, along with information on entry and residence conditions, housing, and everything needed to prepare for your stay in France.



**Garantie visale** is a free rent guarantee program offered by Action Logement, covering unpaid rent and damages for eligible tenants, facilitating their access to housing.



**To compare energy providers' prices** (electricity and natural gas), use online comparison tools such as **Énergie-Info**, which analyze offers based on your consumption and budget.



**CAF (Caisse d'Allocation Familiale)** provides financial assistance for housing through programs like APL (Aide Personnalisée au Logement), ALS (Allocation de Logement Social), and ALF (Allocation de Logement Familial) to help tenants reduce their rental costs.



**The city of Paris** has created the guide for students on accommodation: Rent controls in the private sector, housing schemes, resource centers, low-cost meals and access to healthcare.





Follow us



Institut Pasteur Education



Institut Pasteur Education



@PasteurEdu.bsky.social