

Education Department

CONTACT:

phd@pasteur.fr

www.pasteur.fr/ppu

<https://youtu.be/sCBLRyRCAVg>

Call for applications opens in September for the class starting in October of the following year.

"Participatory Research (PR) is a research-to-action approach that emphasizes direct engagement of local priorities and perspectives.

PR prioritizes co-constructing research through partnerships between researchers and stakeholders, community members, or others with insider knowledge and lived expertise."

Journal of Participatory Research Methods.



PARTNERS:



EDUCATION DEPARTMENT

Pasteur-Paris University (PPU)
Participatory Science

INTERNATIONAL DOCTORAL PROGRAM

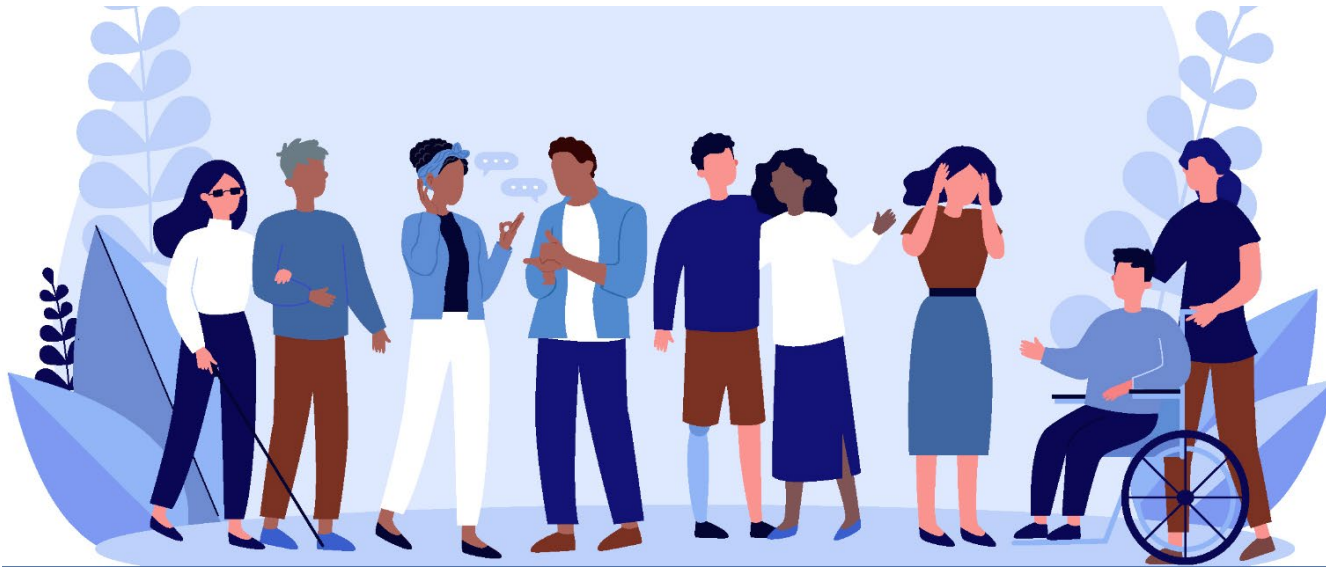
© Institut Pasteur, Communication interne



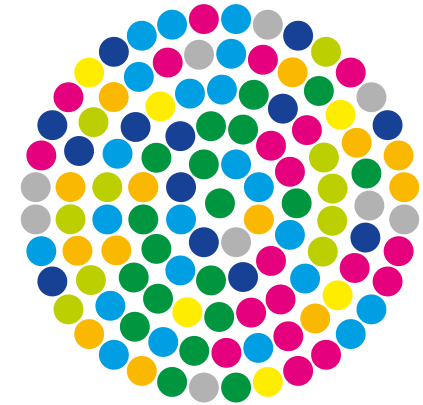
Education Department
Institut Pasteur
25-28, rue du Docteur Roux
75724 Paris Cedex 15
www.pasteur.fr/en/education/



Training at the highest level of future biomedical scientists



Participatory Science PPU-PS Program



CONTEXT OF THE PhD PROGRAM

The PhD program in Participatory Science operates through a collaborative approach that involves both researchers and members of the public.

Researchers at the Institut Pasteur are invited to submit thesis projects that involve the active participation of a nonspecialist population at any stage of the research process.

This involvement may include contributing to project design, data collection, analysis, and dissemination of findings. Projects selected through the PPU call for projects undergo rigorous evaluation to ensure scientific excellence and feasibility.

Multidisciplinary and interdisciplinary approaches will be strongly encouraged.

10
NOBEL PRIZES *

144
RESEARCH UNITS *

AIMS OF THE PROGRAM

- foster innovative and interdisciplinary research projects
- integrate and empower public participation directly into advancements in human health
- enhance relevance, quality, and impact of scientific investigations
- addressing societal challenges and issues

STUDENT BENEFITS

- A three-year salary and social benefits
- An annual travel grant for international scientific workshops and meetings
- Administrative support and housing assistance
- Comprehensive academic and professional skills training

74
NATIONALITIES *

* Institut Pasteur key numbers

350
PhD STUDENTS ON
THE CAMPUS *

UNIQUE DOCTORAL TRAINING

- Partnership with 5 Doctoral Schools (BioSPC, MTCI, Pierre Louis de Santé Publique, Science des Sociétés, ABIES)
- Academic and professional development training is provided through the PPU program
- Students will be supported by a Thesis Advisory Committee
- Students will participate in the PPU retreat, annually
- Students will have the opportunity to prepare for career in academia as well as alternative ones (industry, policy-making...)
- Students will benefit from a personalized follow-up by the Dean, the PPU Steering Committee and the Doctoral Student Office