



Clinical Data Intelligence

+ hypotheses

- risk

Data Mining Solutions &
Decision Support Services
dedicated to

Clinical Studies ●

Safety ●

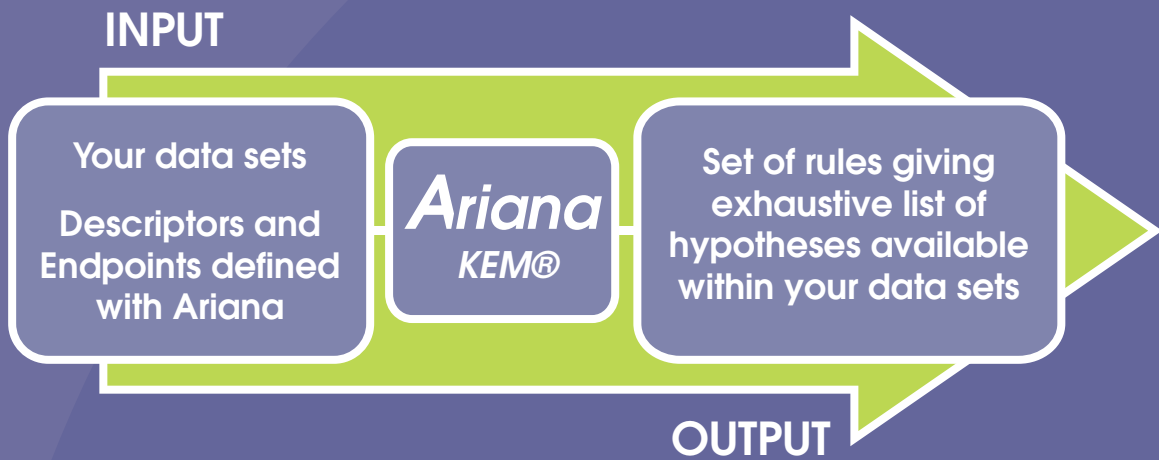
Discovery ●

Diagnostics ●



Knowledge Extraction Management

pharma



KEM®, our Knowledge Extraction Management Platform is the result of years of experience in collaboration with a leading Artificial Intelligence team of the CNRS for research and with the major Pharma companies for applications development and their validation.

Our technology **KEM®** can exhaustively mine your data and systematically extract and manage all consistent hypotheses.

KEM® is a Rule-based method (Galois lattices) with broad applications in Clinical research and Safety analysis. It has also been successfully applied and broadly validated in Drug Discovery.

KEM® integrates and exhaustively mines multiple data sources, suggests improved compounds for use in pharmaceutical applications and detects weak signals.

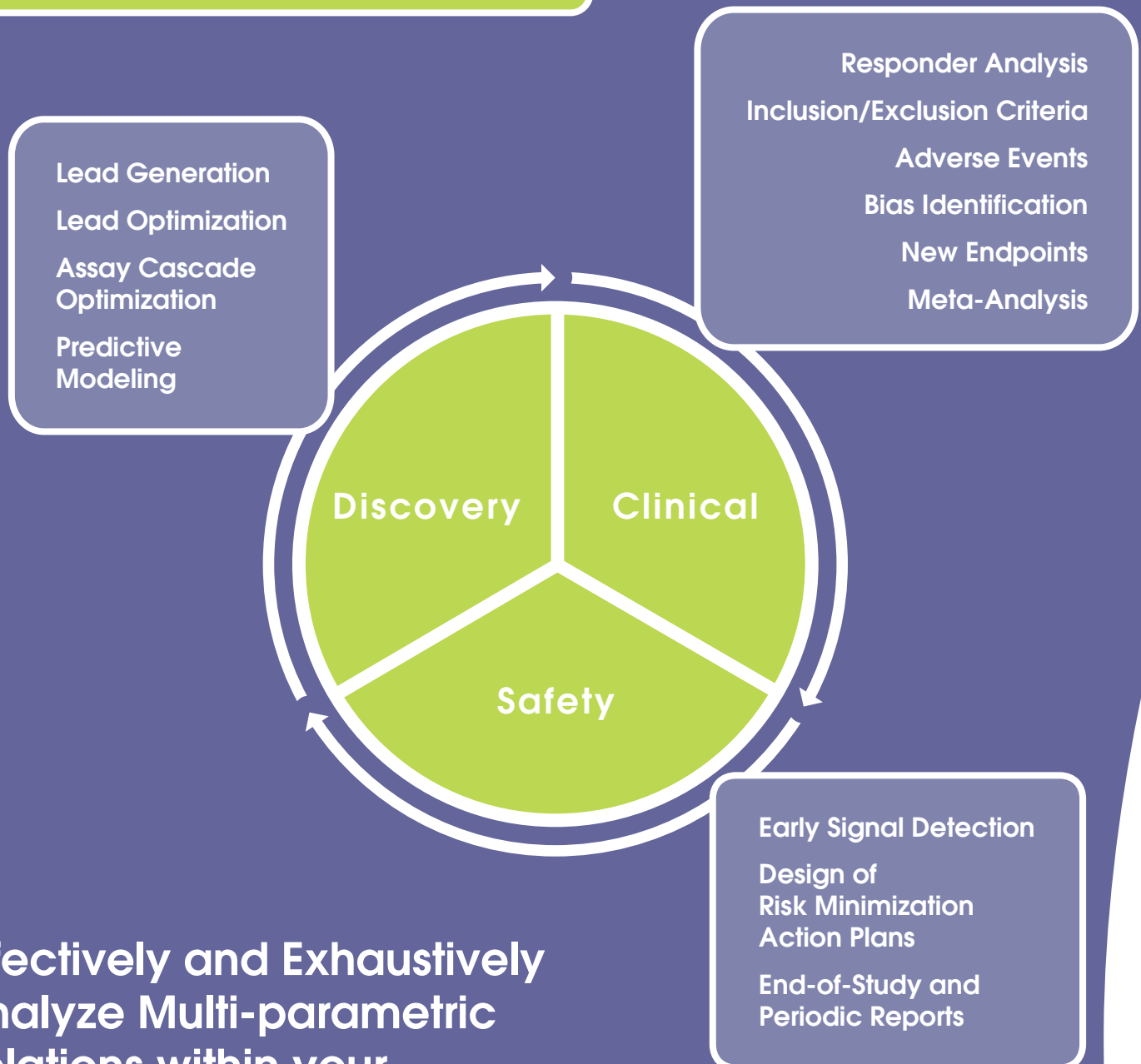
The system is robust to incomplete data and can always explain its decisions.

Adding **KEM®** to your Data Analysis tools will enable your organization to go beyond the limitation of standard methods for analyzing your data.

Capabilities	Existing Numerical Methods	Ariana KEM Platform
Test specified hypotheses	✓	✓
"Fitting" i.e., use coefficient, weights, etc	✓	✗
Generate and Prioritize hypotheses	✗	✓
Exhaustive analysis	✗	✓
Easy to interpret system	✗	✓
Handle missing data	✗	✓
Multi objective optimization	✗	✓

Generating New Validated Hypotheses Leading To Better Decisions

PARIS-BOSTON

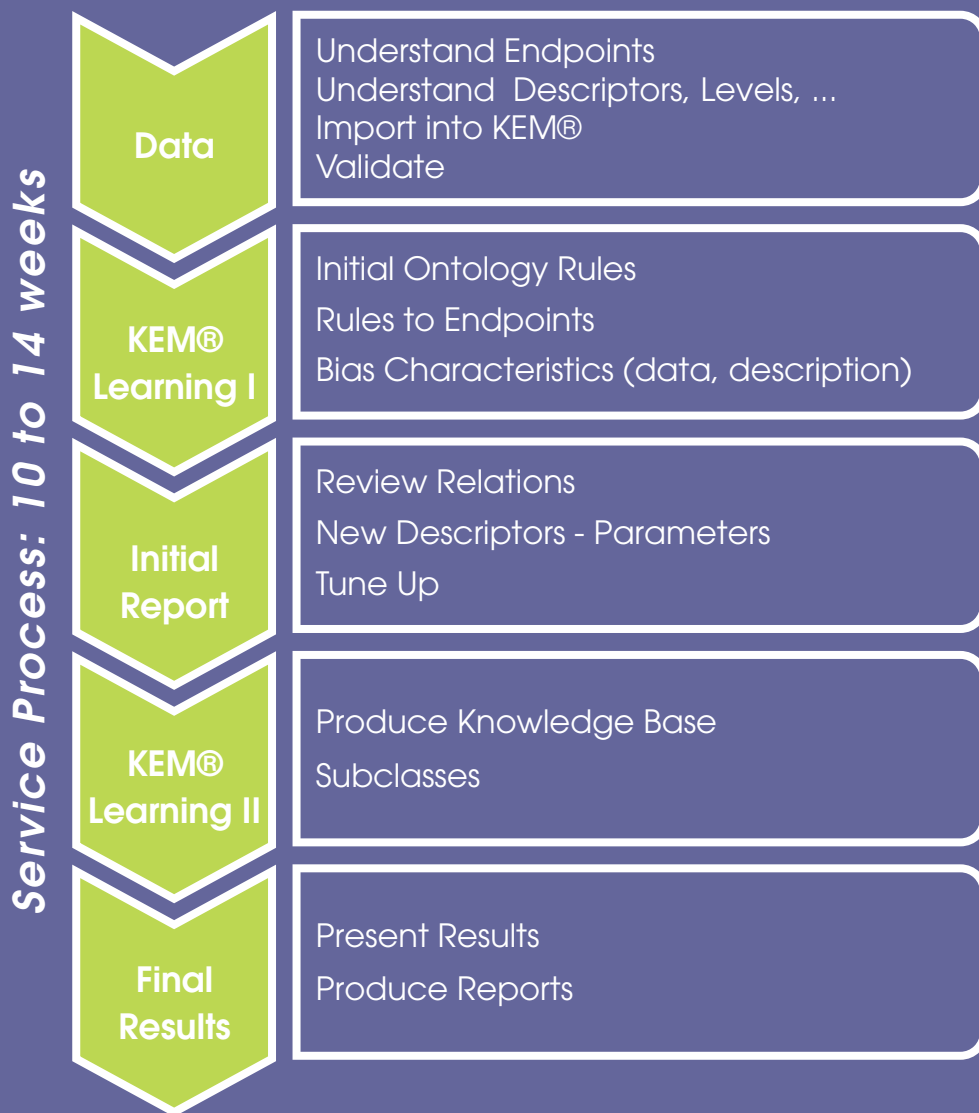


Effectively and Exhaustively Analyze Multi-parametric Relations within your Data Sets

Ariana™ has developed **KEM® (Knowledge Management and Extraction)**, a proprietary decision support technology for rapid analysis of multi-parametric – multi-objective data.

- Discovery: Deployed in pharmaceutical companies, **KEM®** has a unique ability to translate analysis of data from multiple sources into successful decisions for the optimization of novel drug therapies.
- Clinical Trials: **KEM®** can fully characterize populations that are most responsive and populations at risk, optimizing the design and radically improving the outcome of the trial as well as focusing the post launch marketing effort.
- Safety: Early Signal Detection. **KEM®** provides an exhaustive hypotheses generation platform. Unbiased logic based evaluation of relations between Adverse Events and products leads to key drivers for Safety Reports, Safety Specifications and Risk Minimization Action Plans.

Ariana™ offers access to KEM® technology through non exclusive licensing and service partnerships with third parties



Boston
One Broadway, 14th Floor
Cambridge MA-02142
USA
t: +1 617 583 1340

Paris
28 rue du Docteur Finlay
75015 Paris
France
t: +33 (0)1 44 37 17 00
f: +33 (0)1 44 37 17 01

Ariana™ is a leading decision support company, focused on transforming data into information to accelerate the discovery and development process and to improve the safety of pharmaceutical drugs.

The Company, based in central Paris, is a spin off of the **Institut Pasteur**. It was launched in 2003.

It has already established a rapidly growing and profitable software business through collaboration and licensing agreements with some of the largest pharmaceutical and biotechnology companies.

www.arianapharma.com

PARIS-BOSTON